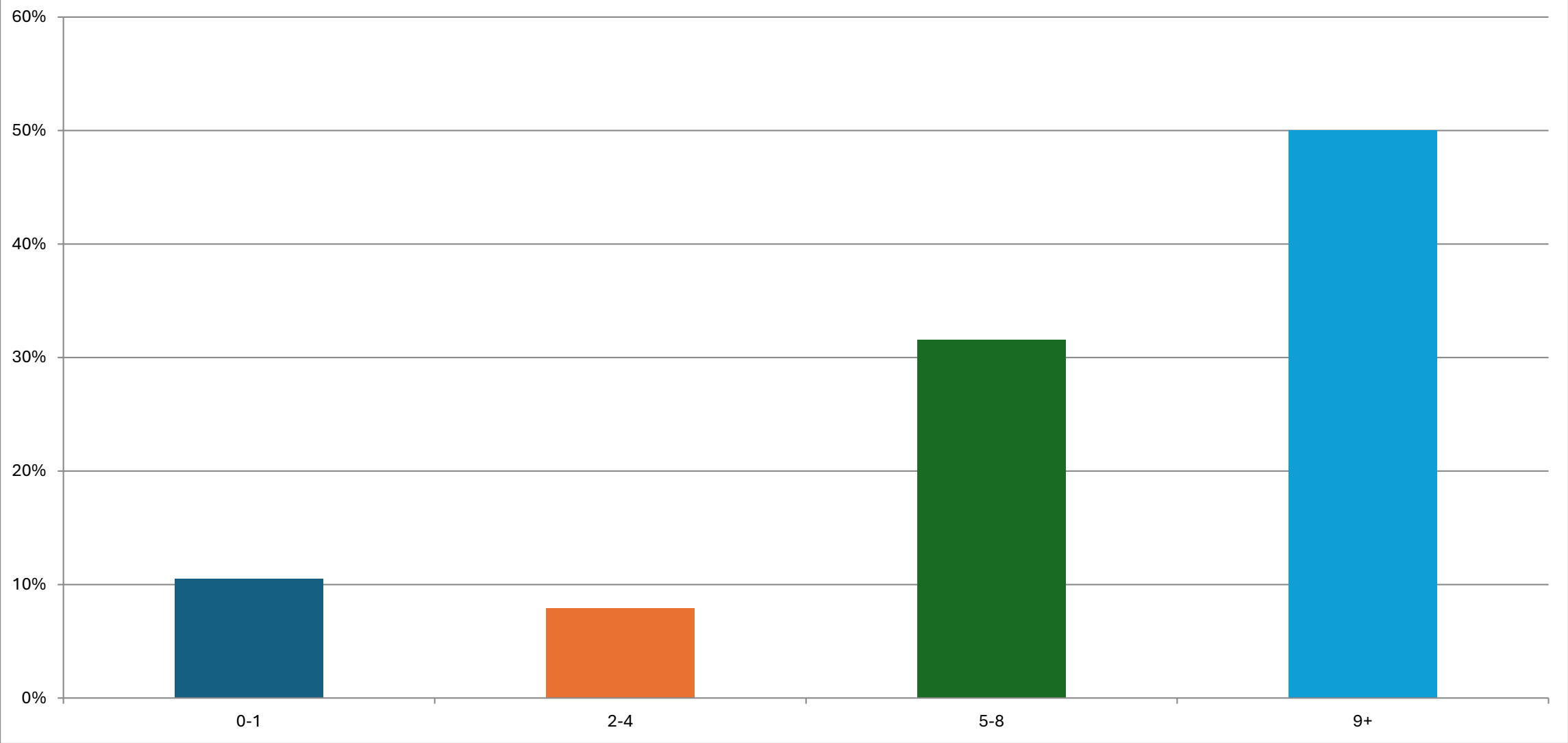
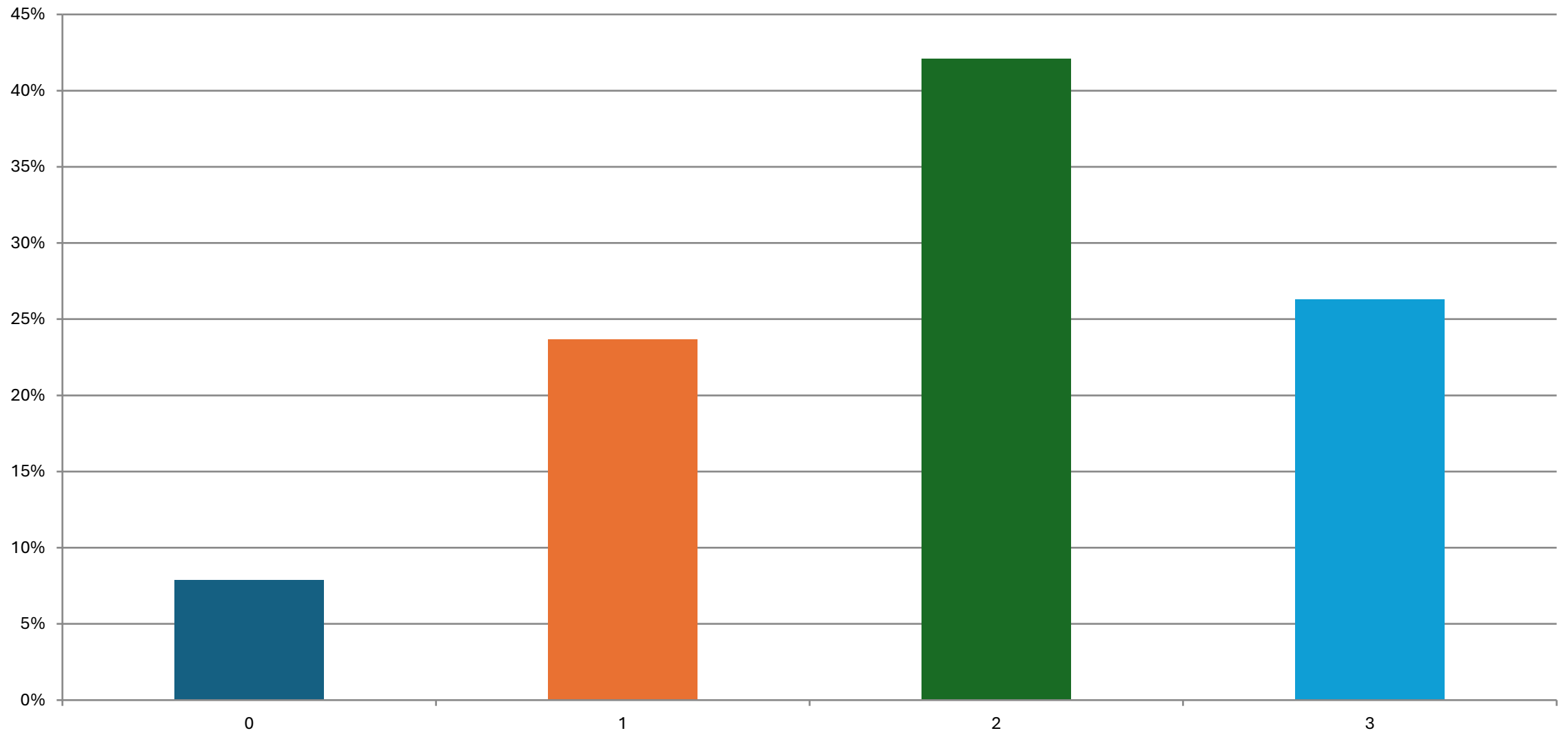


Graphs from Fall 2024
ASTS Inpatient Abdominal Transplant
APP Structure Survey

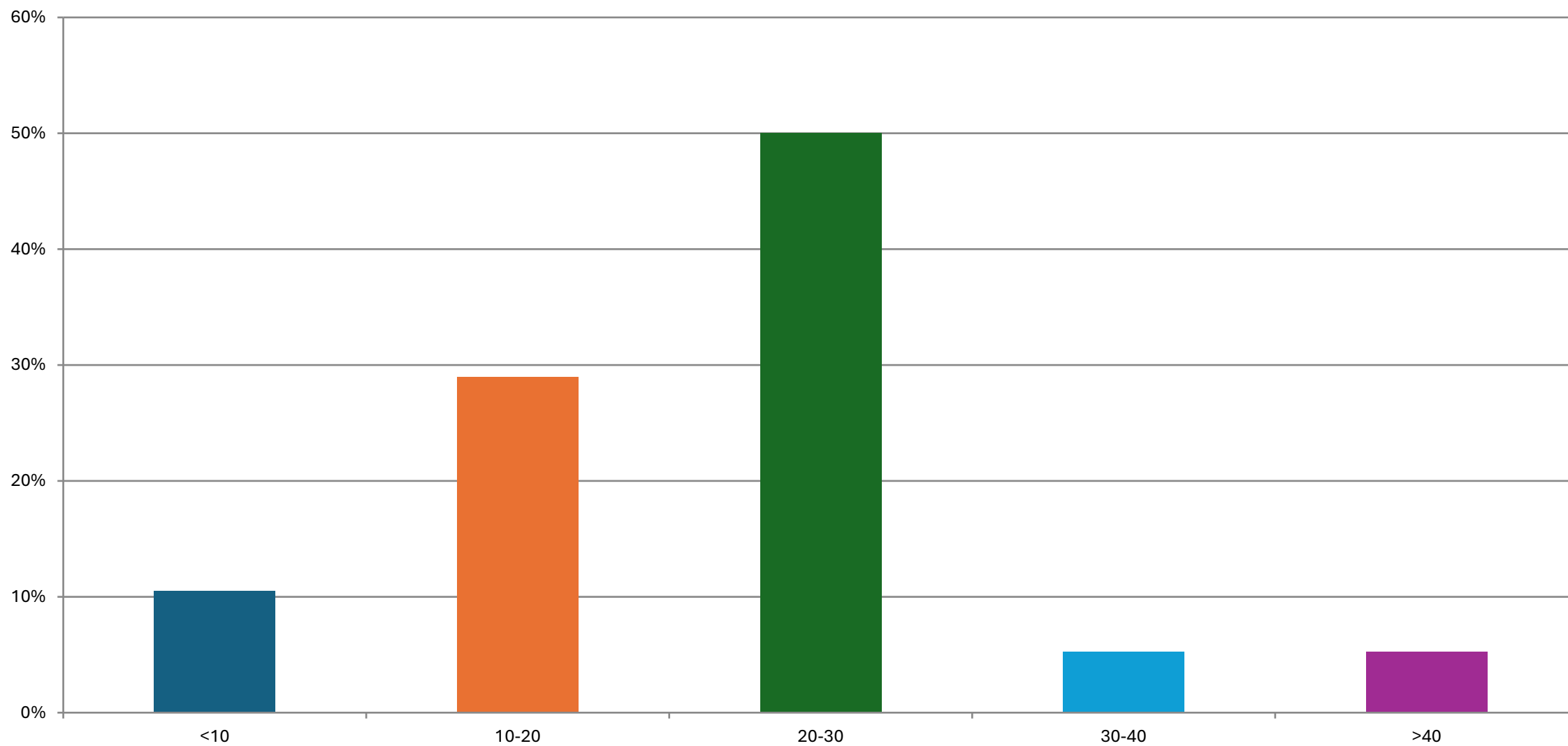
How many inpatient abdominal transplant APPs work at your center?



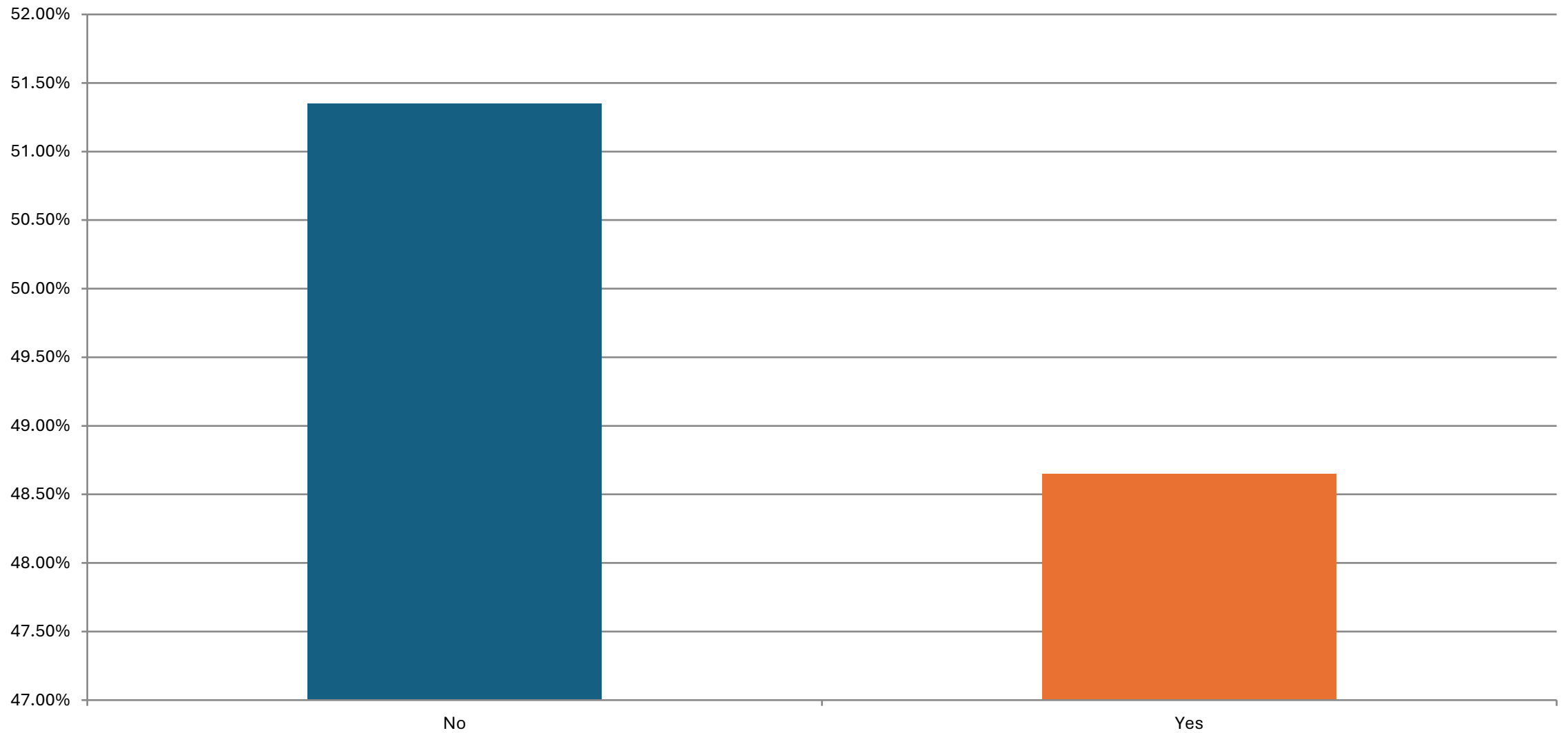
How many surgical residents are assigned to the transplant service at your center?



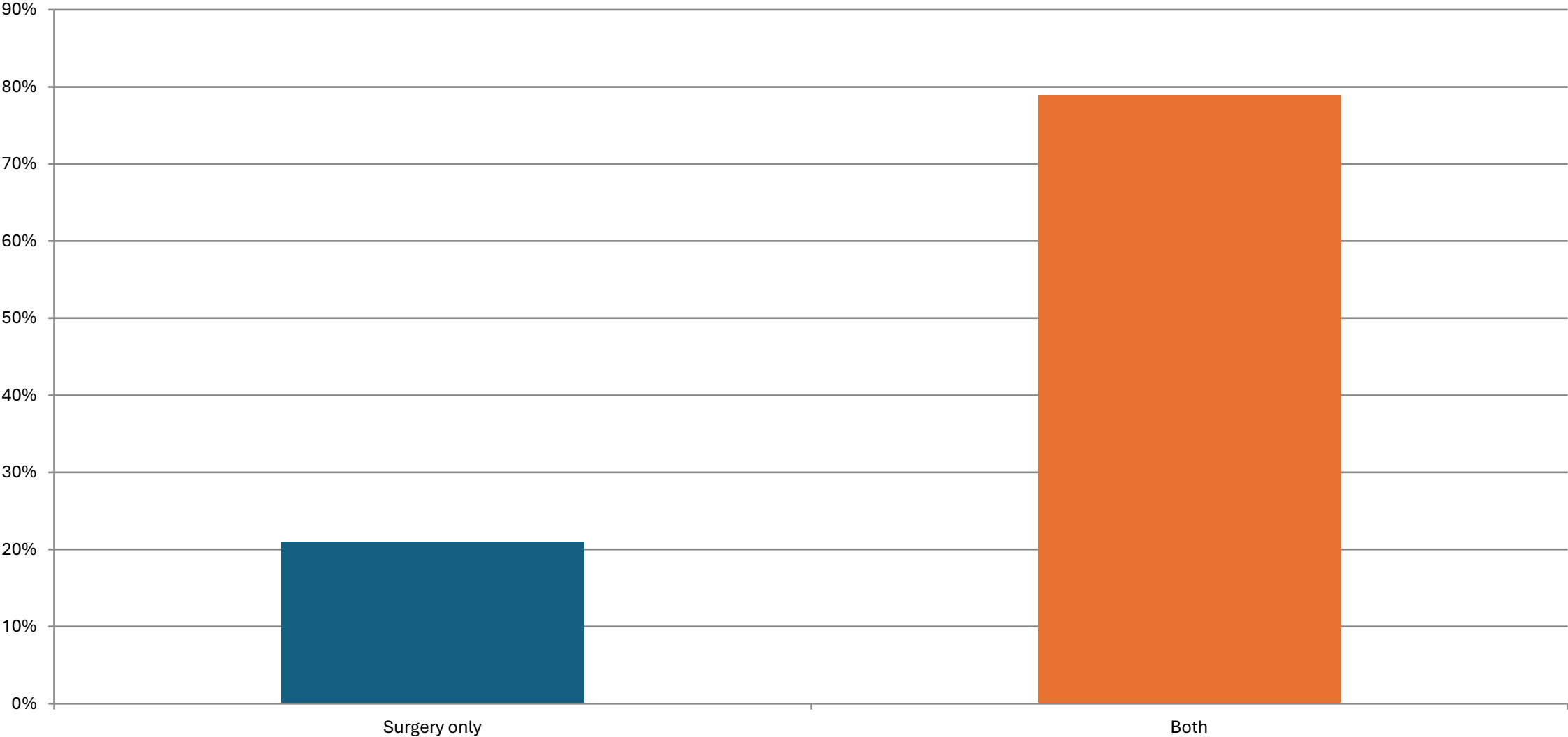
What is the average daily census of your inpatient service?



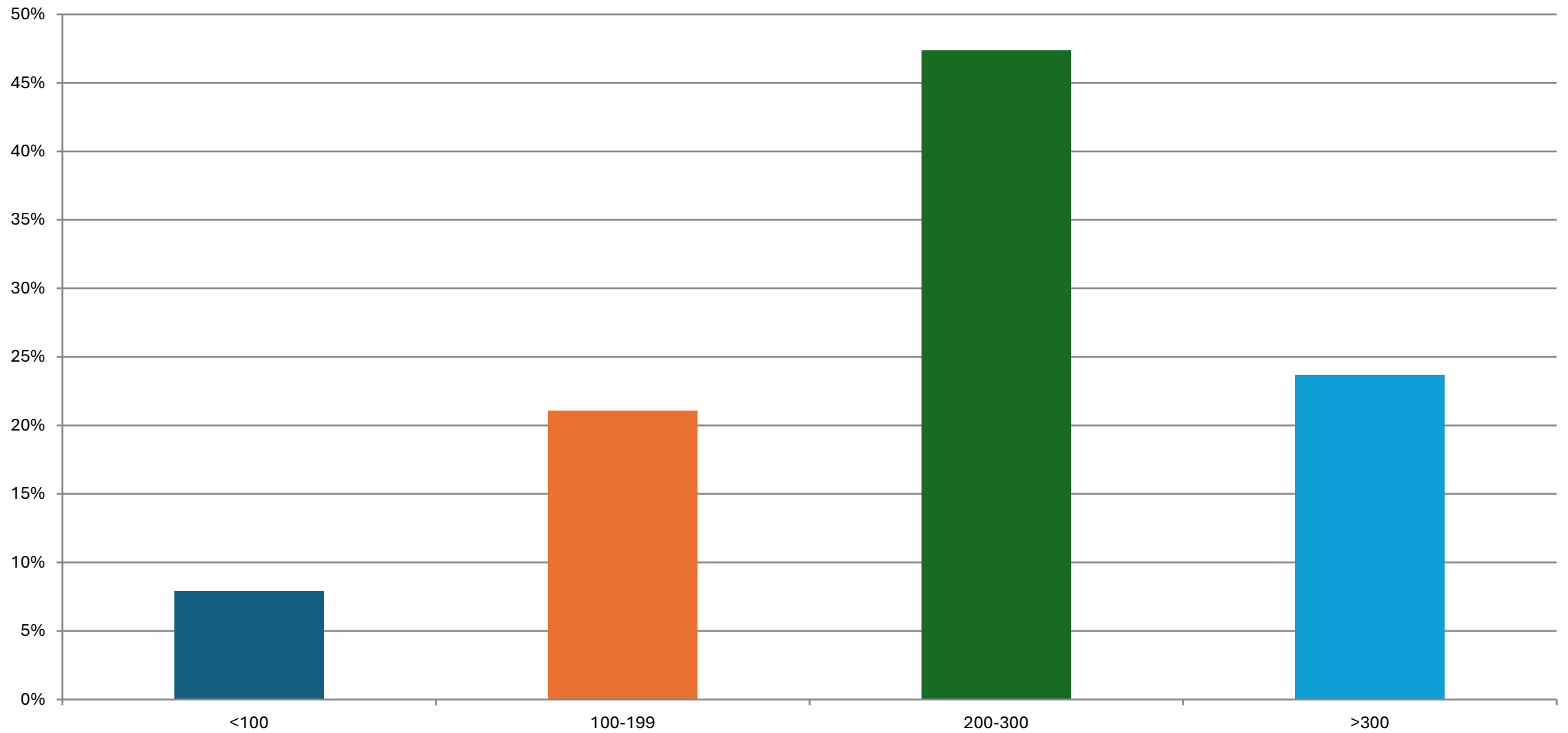
Does your inpatient surgery service include both pre- and post-transplant patients?



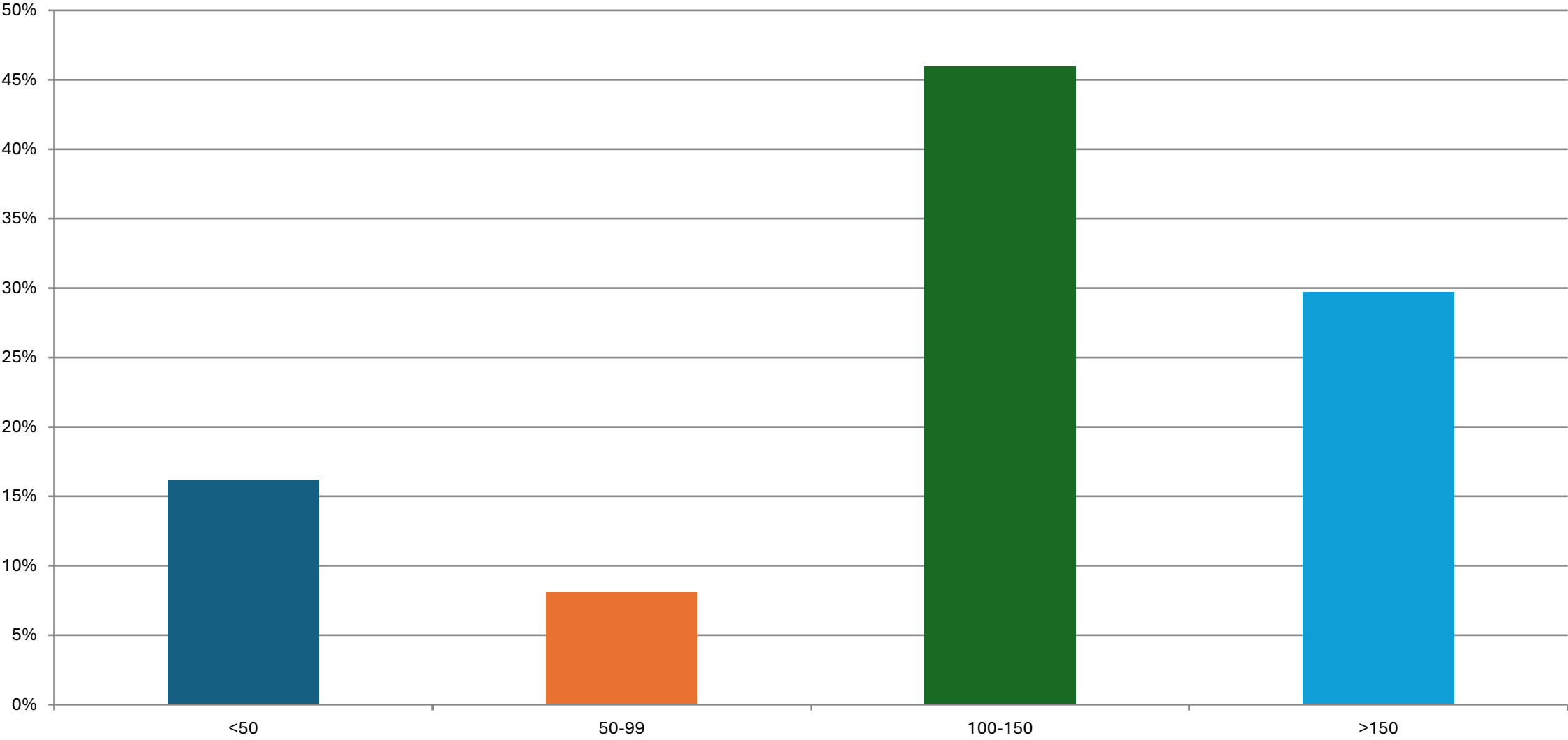
Does your inpatient surgery service include both medicine and surgical patients?



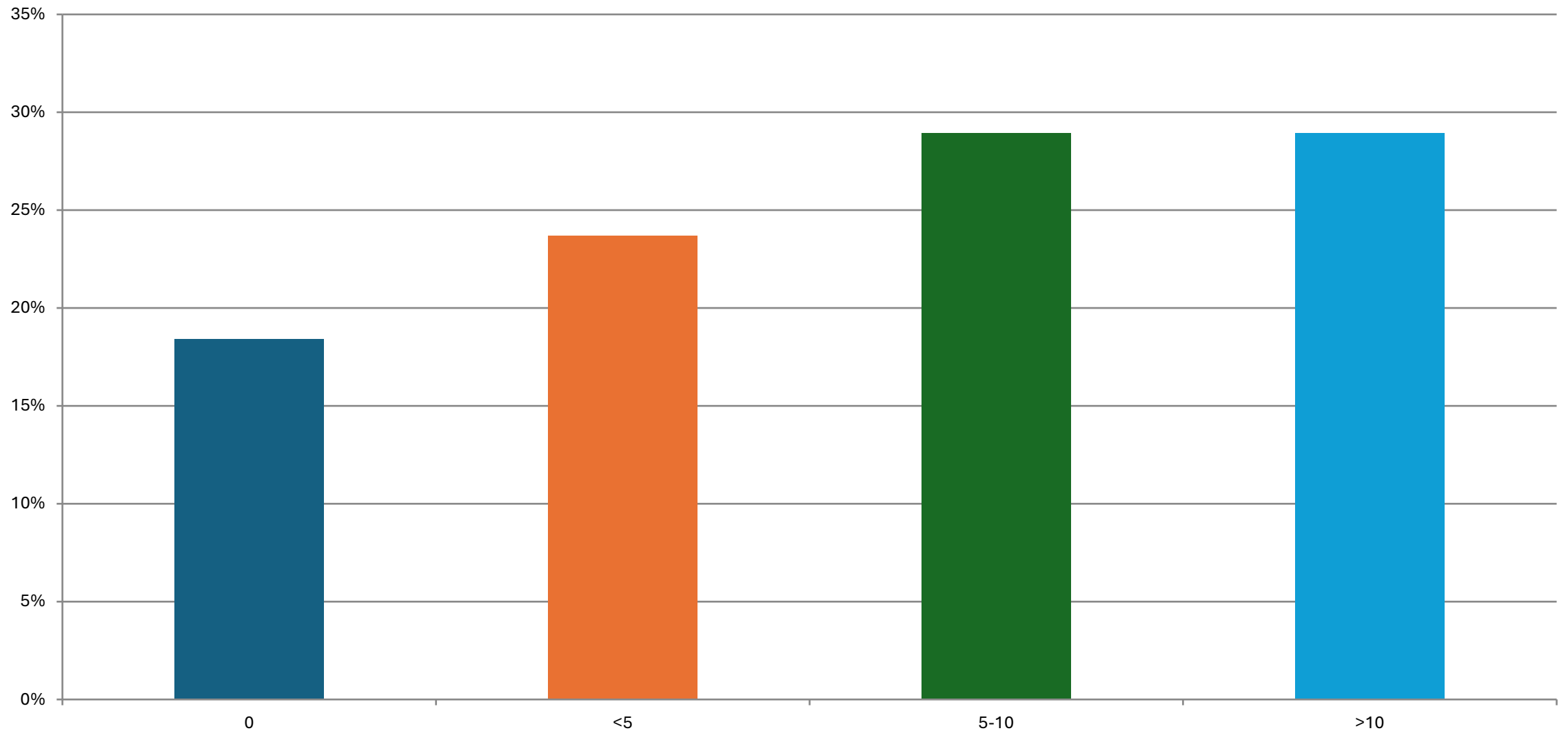
What is your annual kidney transplant volume?



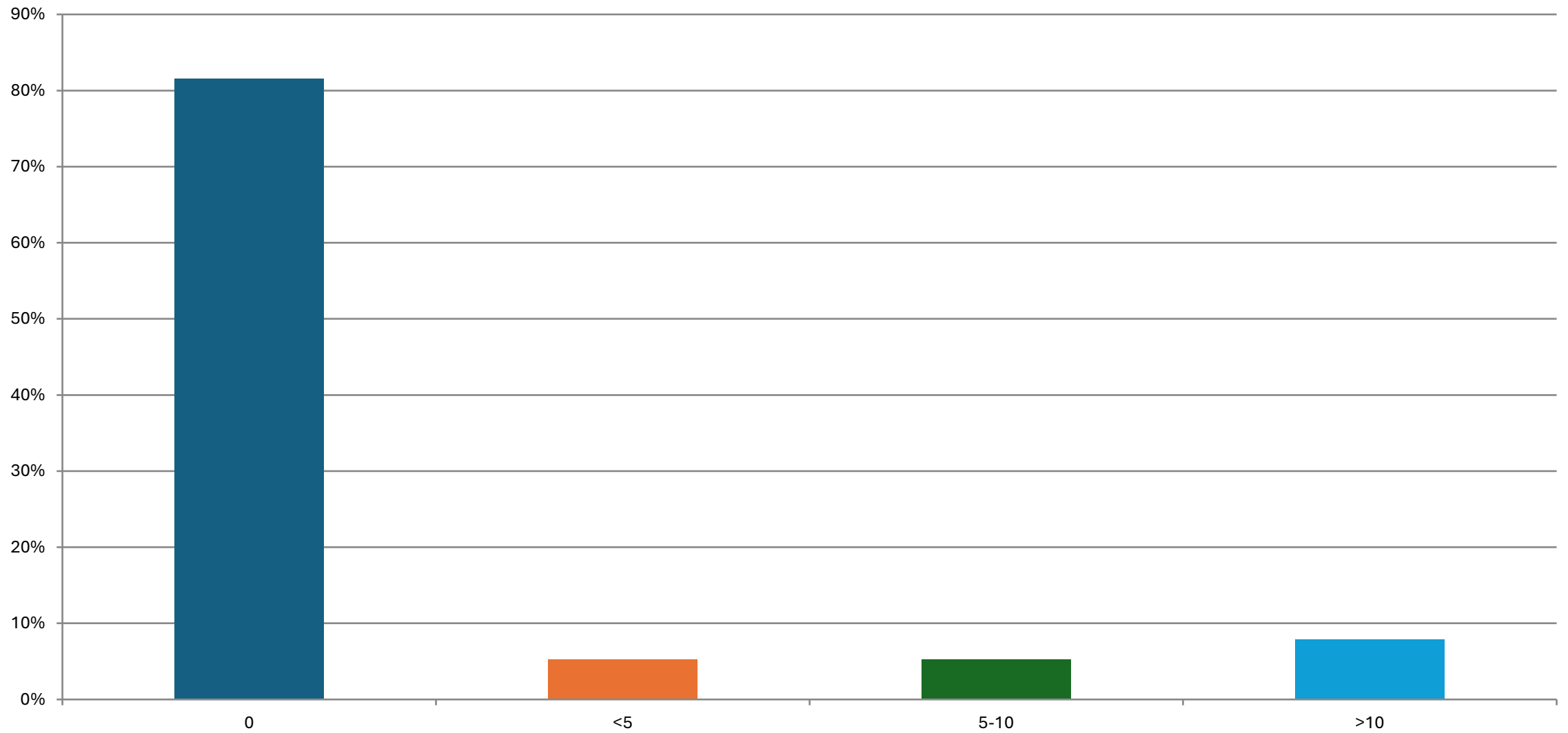
What is your annual liver transplant volume?



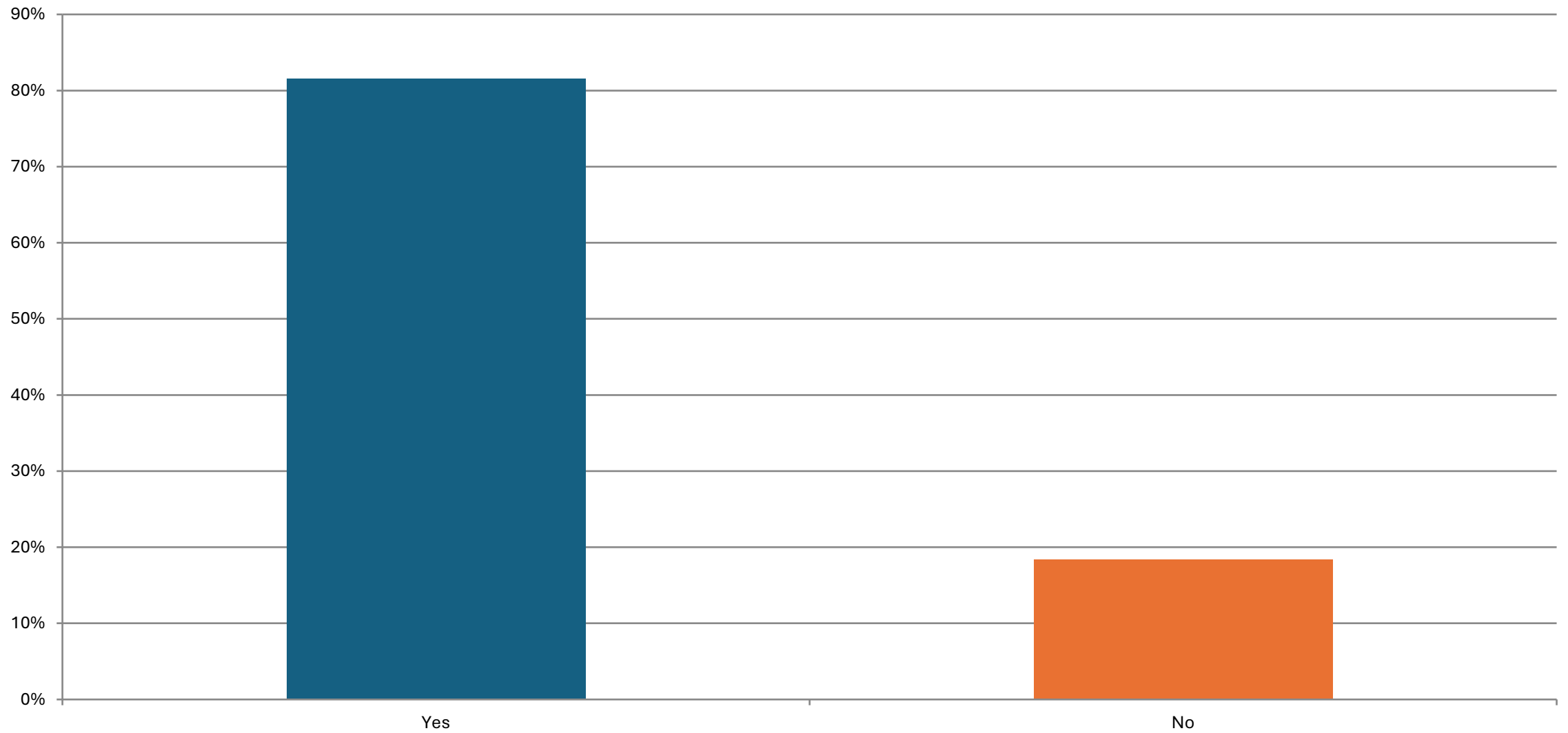
What is your annual pancreas transplant volume?



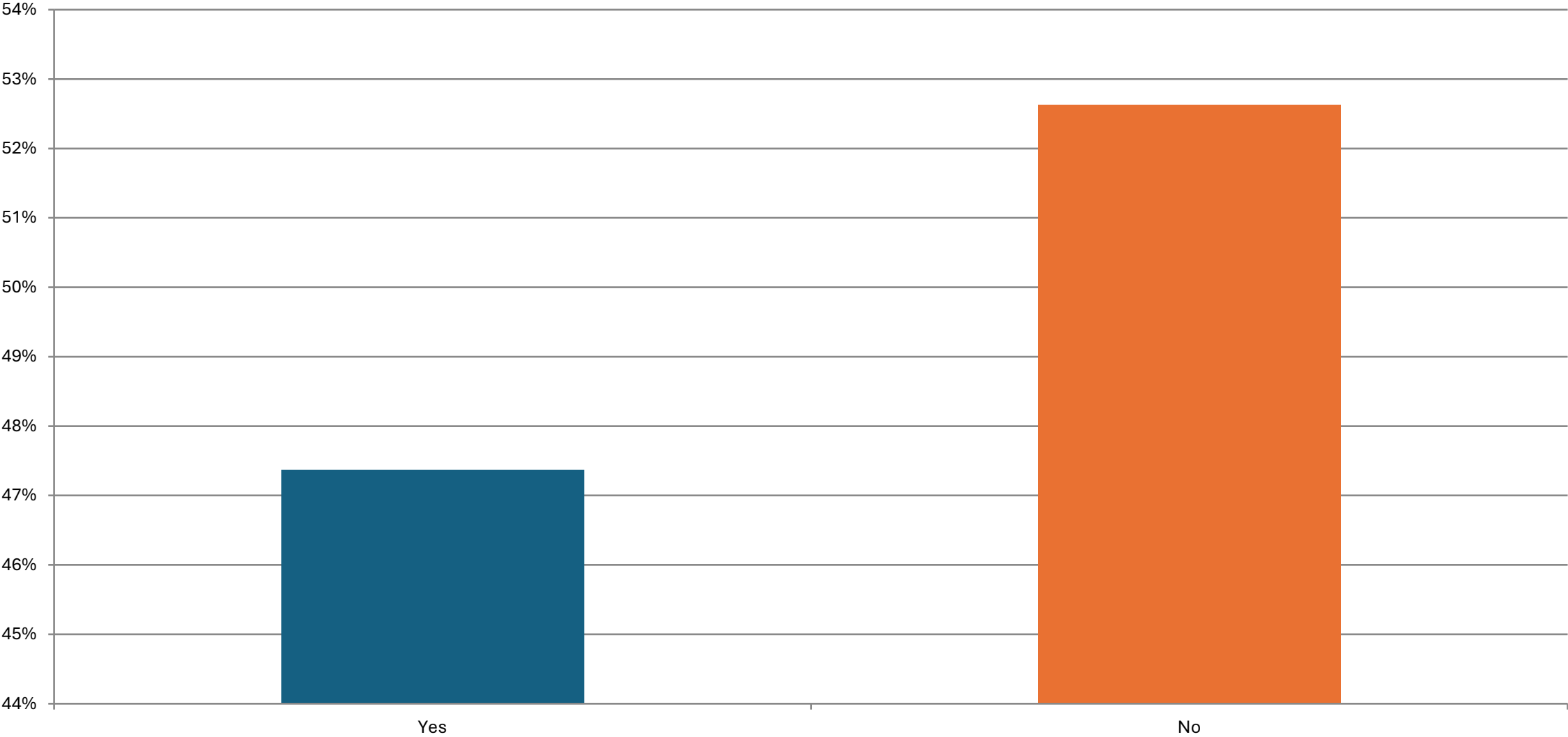
What is your annual intestine transplant volume?



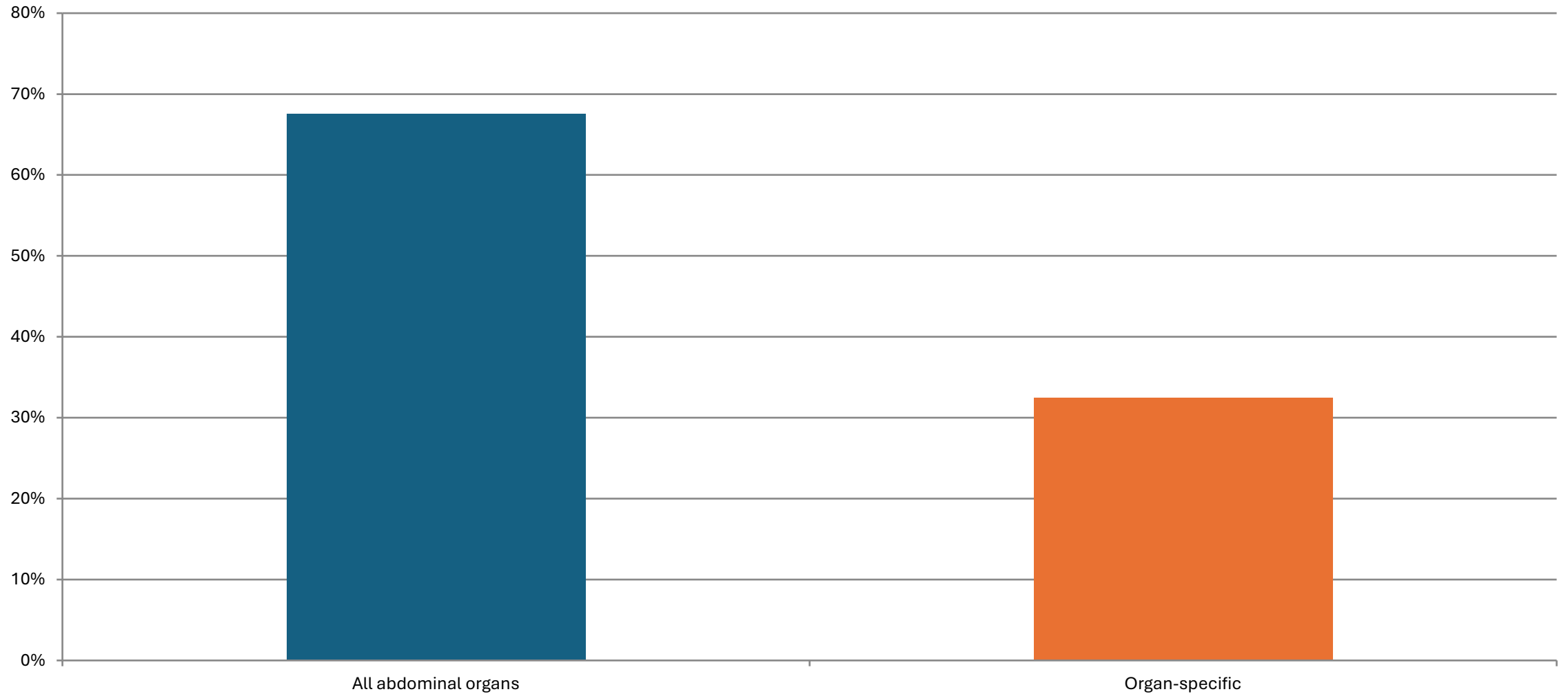
Does your service have APP coverage 7 days a week?



Is APP coverage 24 hours per day?



Do inpatient APPs at your center cover all abdominal organs or are they organ-specific?



Do your inpatient APPs have clinic responsibilities?

